



LATORIA TERRACE



2176 Bellflower Dr. (Lot 20)

*NOTE: In the interest of maintaining high standards, the developer reserves the right to modify plans, specifications and design without prior notice. Drawings contained within are artist renderings only.

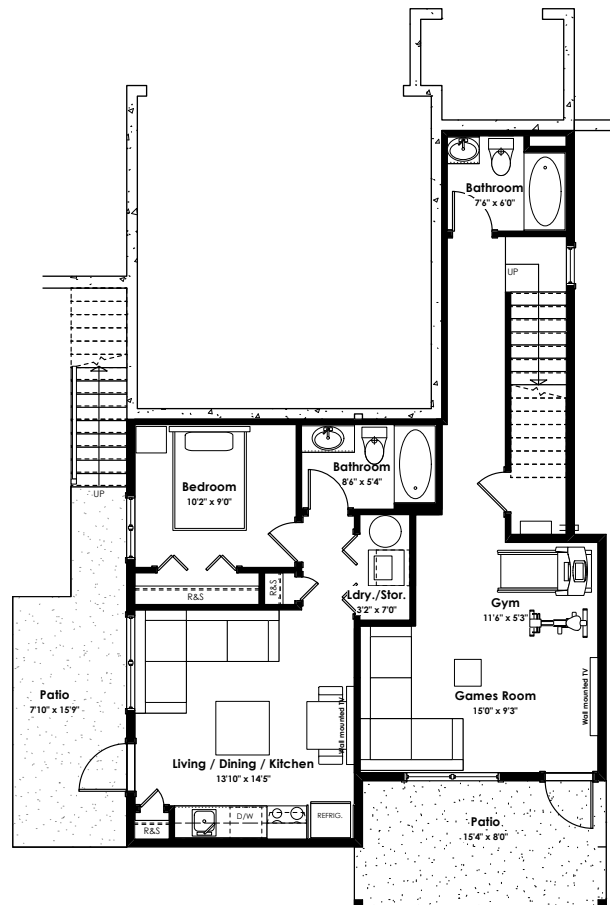
Sizes and dimensions are approximate and may vary with actual plan and survey. Exterior style may change pending municipal approval.

Retaining Wall construction types:

- Non-mortared boulder wall
- Concrete Cast in place wall
- Pre-cast masonry landscape wall

Retaining walls will be designed, placed and constructed in the sole discretion of the developer.

Furniture as shown on plans are for layout purposes only and are not included in the sale.



Lower Floor

Primary: 457 sq.ft.

Suite: 459 sq.ft.

LIVING AREA

Primary: 2,605 sq.ft.

Suite: 459 sq.ft.

Total: 3,064 sq.ft.

OTHER

Garage: 416 sq.ft.



LATORIA
TERRACE



LANGDON WEIR
CONSTRUCTION
LTD.

2176 Bellflower Dr. (Lot 20)

*NOTE: In the interest of maintaining high standards, the developer reserves the right to modify plans, specifications and design without prior notice. Drawings contained within are artist renderings only.

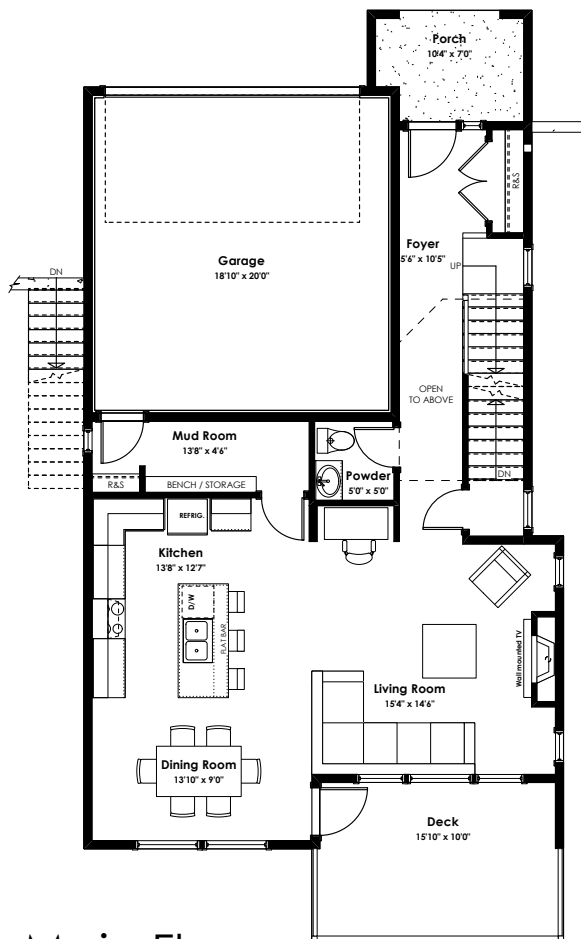
Sizes and dimensions are approximate and may vary with actual plan and survey. Exterior style may change pending municipal approval.

Retaining Wall construction types:

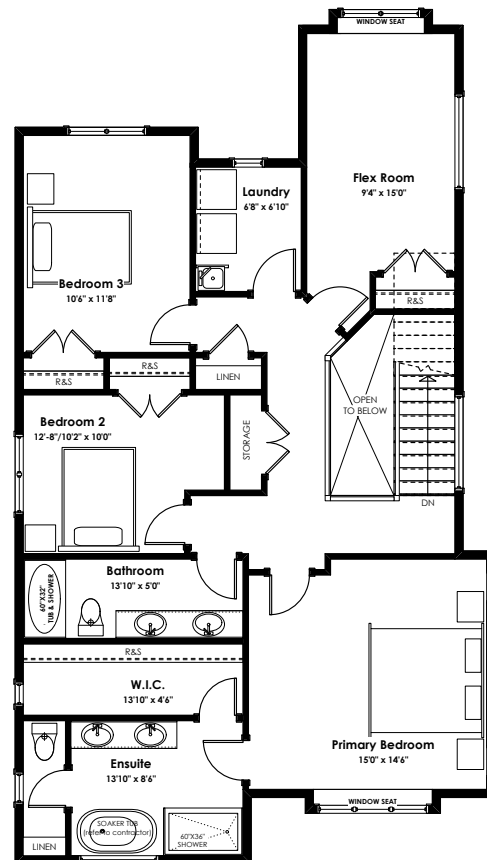
- Non-mortared boulder wall
- Concrete Cast in place wall
- Pre-cast masonry landscape wall

Retaining walls will be designed, placed and constructed in the sole discretion of the developer.

Furniture as shown on plans are for layout purposes only and are not included in the sale.



Main Floor
Primary: 891 sq.ft.



Upper Floor
Primary: 1257 sq.ft.

LIVING AREA	
Primary:	2,605 sq.ft.
Suite:	459 sq.ft.
Total:	3,064 sq.ft.

OTHER	
Garage:	416 sq.ft.