



LATORIA

TERRACE

the Richard
Lot 35 - 1211 Ashmore Terrace



5 bedroom, 4.5 bath with legal suite | 3,273 sq.Ft

The developer reserves the right to make modifications and changes to the building design, elevations, dimensions, specifications, features and prices without prior notification. Decks, patios, stairs and windows may vary based on site conditions. All sizes and dimensions are approximate and based on architectural measurements. Reverse and/or mirror plans occur throughout the development. Please see disclosure statement for specific offering once available. E. & O. E.



LATORIA

TERRACE

the Richard
Lot 35 - 1211 Ashmore Terrace

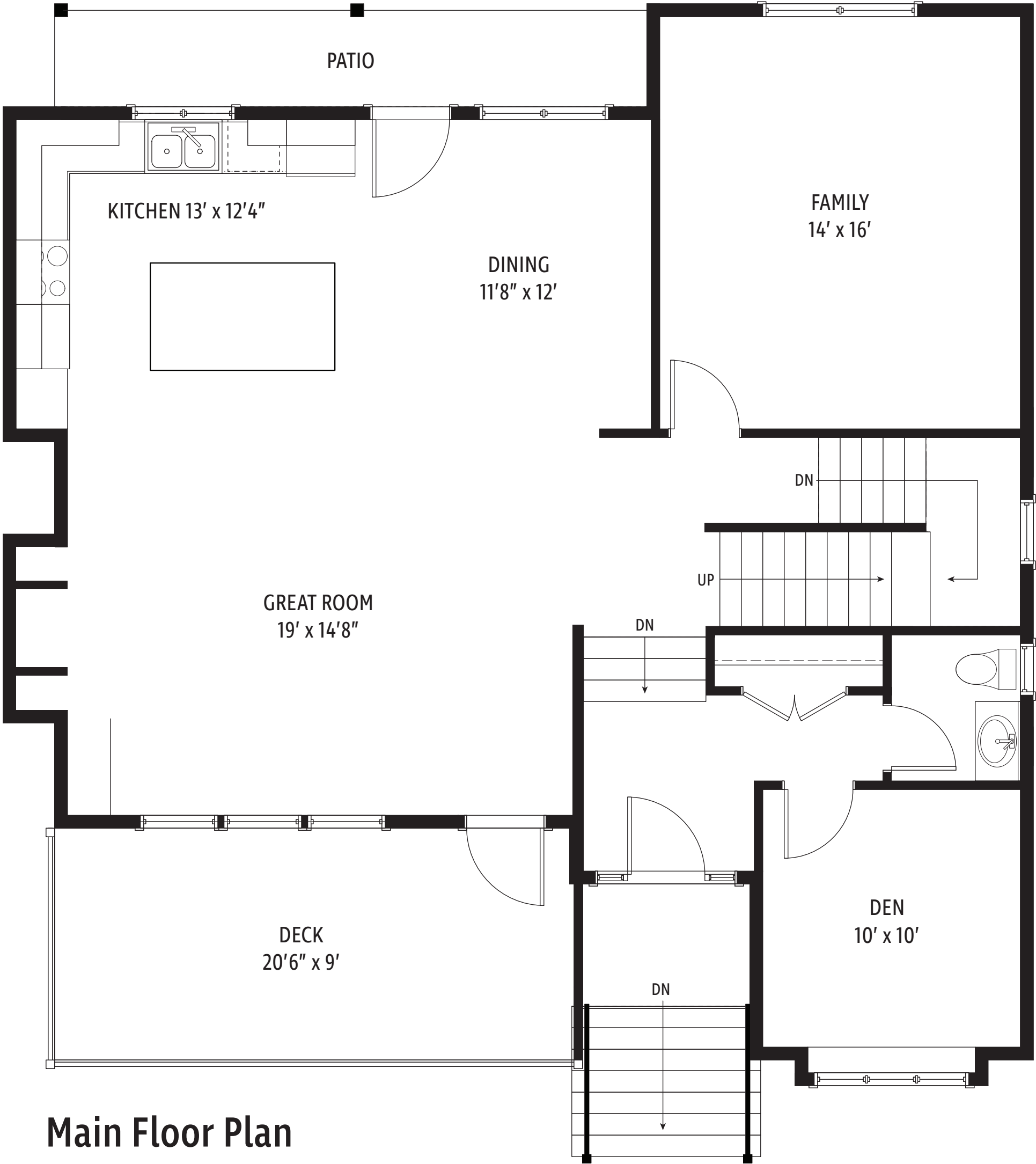
SUITE TOTAL AREA: 571 sq.ft.





LATORIA
TERRACE

the Richard
Lot 35 - 1211 Ashmore Terrace



Main Floor Plan

LIVING: 1279 sq.ft.
DECK: 184 sq.ft.

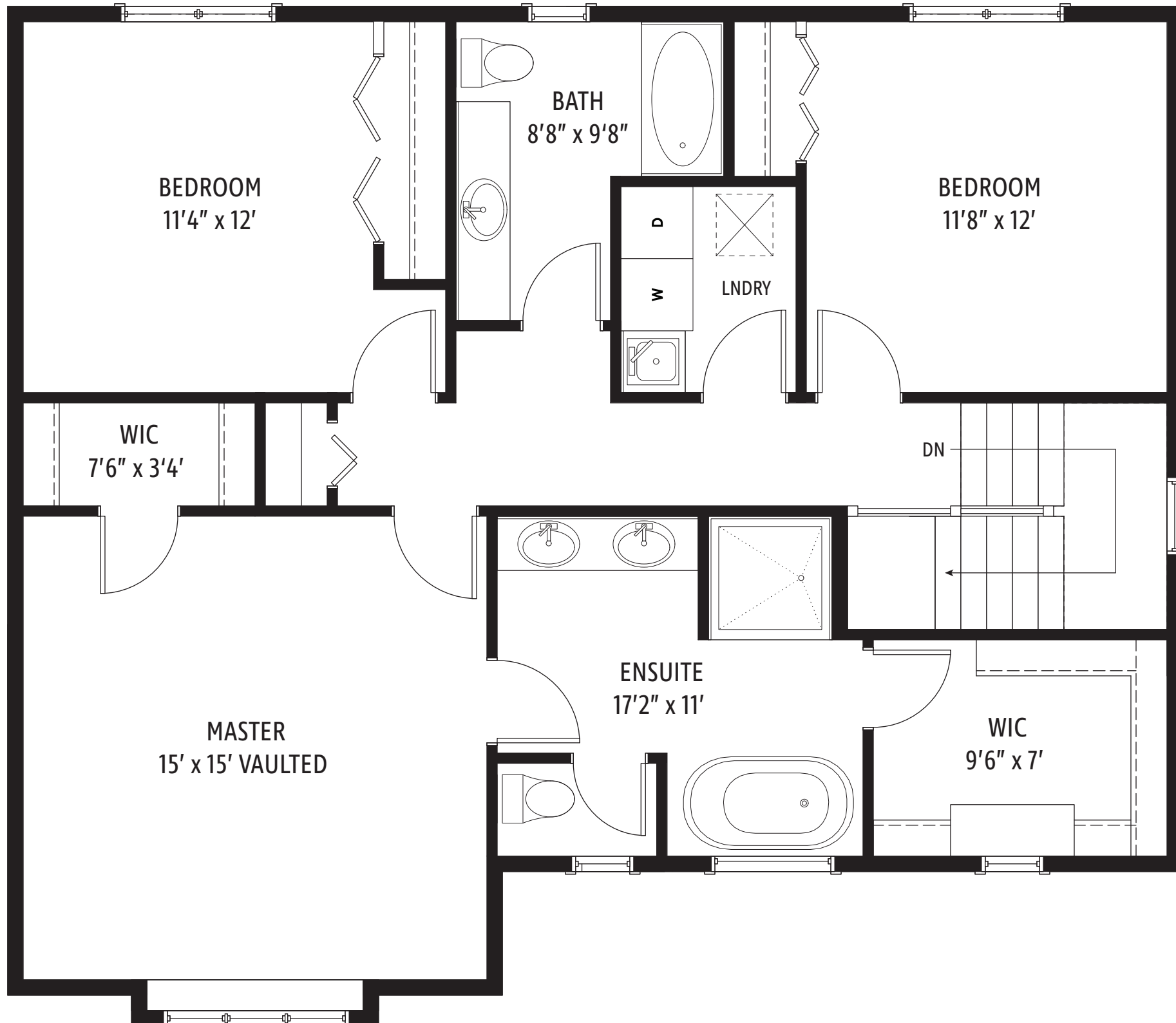
The developer reserves the right to make modifications and changes to the building design, elevations, dimensions, specifications, features and prices without prior notification. Decks, patios, stairs and windows may vary based on site conditions. All sizes and dimensions are approximate and based on architectural measurements. Reverse and/or mirror plans occur throughout the development. Please see disclosure statement for specific offering once available. E. & O. E.



LATORIA

TERRACE

the Richard
Lot 35 - 1211 Ashmore Terrace



Upper Floor Plan

LIVING: 1063 sq.ft.