

The Rusty

Lot 15A - 1256 Ashmore Terrace

5 BD / 4.5 Bath / 1 BD Suite



LatoriaTerrace.ca

\$1,479,000

LATORIA
TERRACE



LANGDON WEIR
CONSTRUCTION
LTD.

Chris Langdon

Realtor

chris@langdonweir.com

MOBILE 250-893-8862

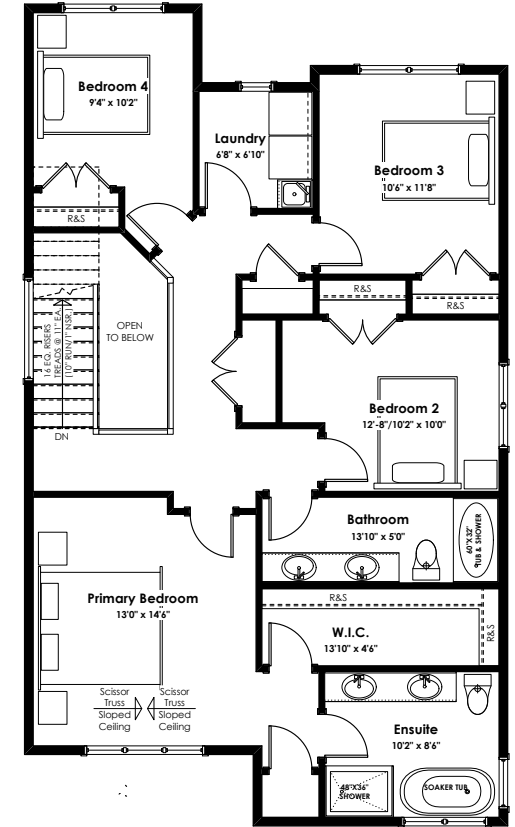
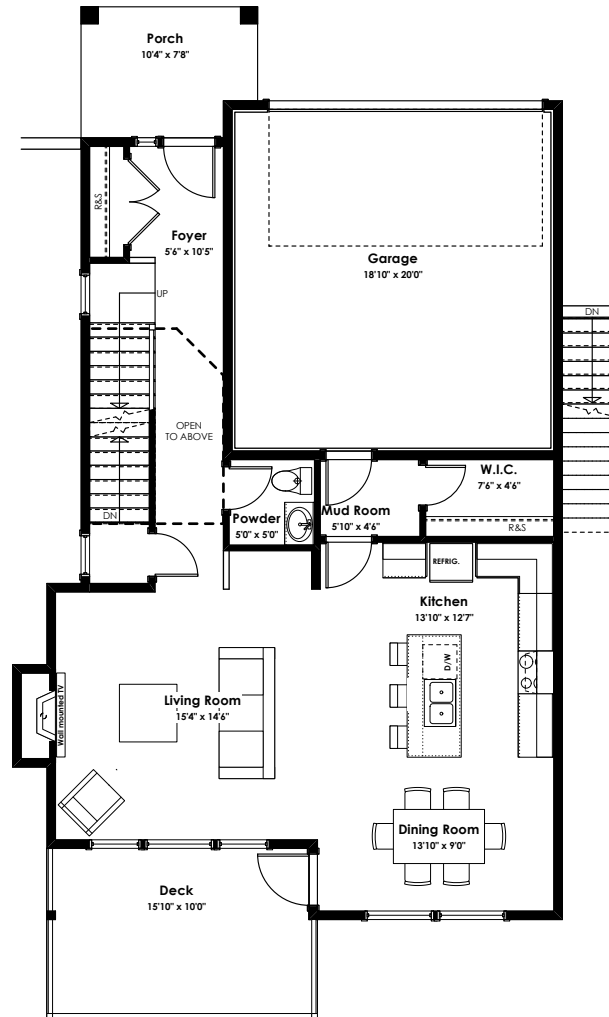
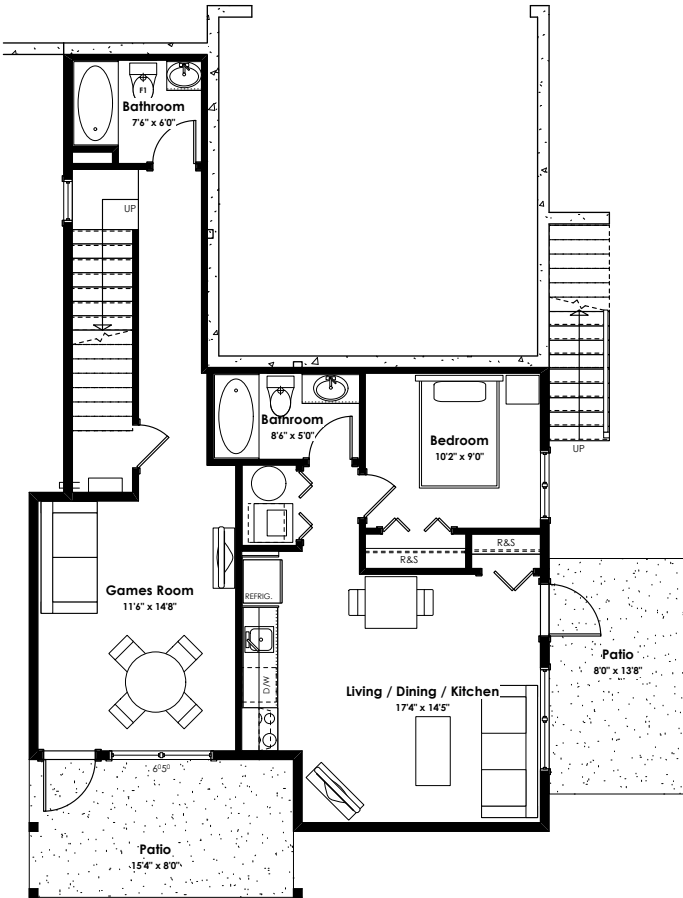
LOWER

MAIN

UPPER

Lot 15A - 1256 Ashmore Terrace

5 BD / 4.5 Bath / 1 BD Suite



SPECIFICATIONS

LOWER	891 SQ. FT.
MAIN	891 SQ. FT.
UPPER	1,138 SQ. FT.
TOTAL FINISHED AREA	2,920 SQ. FT.

FEATURES

- FOUR BEDROOMS UPSTAIRS
- ONE BEDROOM / 480ft² LEGAL SUITE W/ 9' CEILING
- MEDIA or GAMES ROOM + FULL BATH DOWNSTAIRS
- PREMIUM KITCHENAID APPLIANCES
- HEAT PUMP + GAS FIREPLACE + HOT WATER ON DEMAND
- COVERED BACK DECK & PRIVATE SUNNY BACK YARD

LatoriaTerrace.ca



These plans are not intended to fully or completely represent the final product. All sizes are approximate. Information presented is subject to change without notice.