



LATORIA

TERRACE



2180 Bellflower Drive (Lot 21)

*NOTE: In the interest of maintaining high standards, the developer reserves the right to modify plans, specifications and design without prior notice. Drawings contained within are artist renderings only.

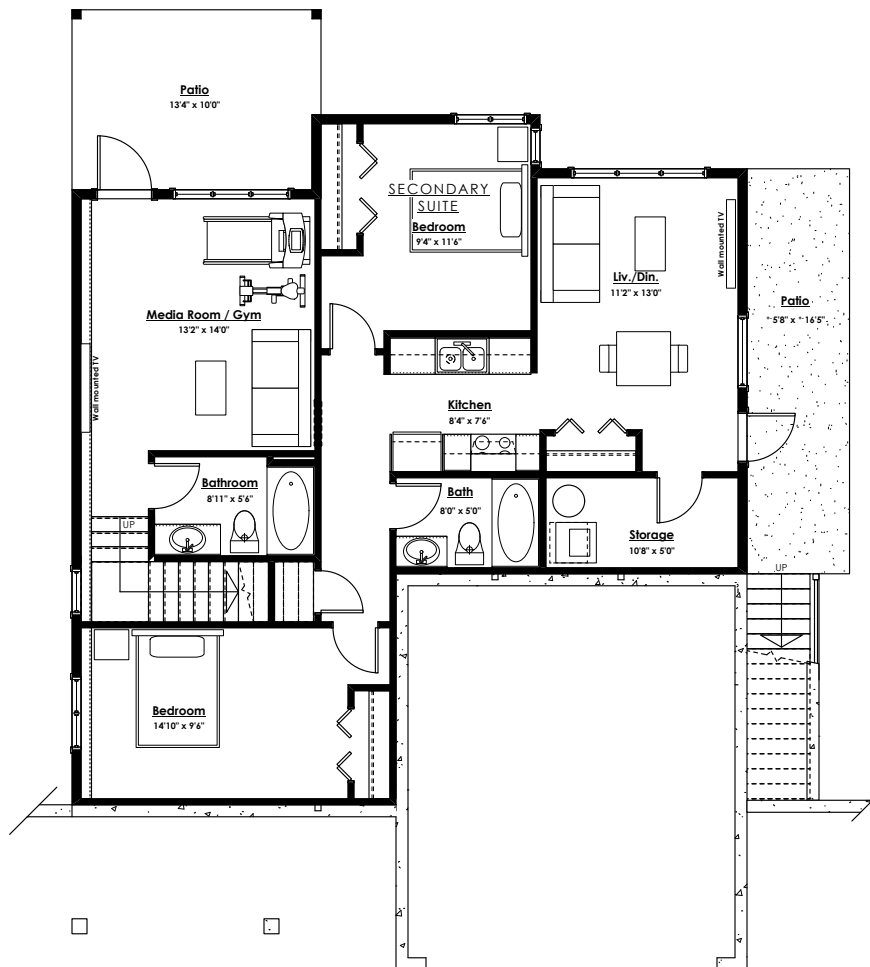
Sizes and dimensions are approximate and may vary with actual plan and survey. Exterior style may change pending municipal approval.

Retaining Wall construction types:

- Non-mortared boulder wall
- Concrete Cast in place wall
- Pre-cast masonry landscape wall

Retaining walls will be designed, placed and constructed in the sole discretion of the developer.

Furniture as shown on plans are for layout purposes only and are not included in the sale.



Lower Floor
 Primary: 321 sq.ft.
 Suite: 788 sq.ft.

LIVING AREA	
Primary:	2474 sq.ft.
Suite:	788 sq.ft.
Total:	3262 sq.ft.

OTHER	
Garage:	429 sq.ft.



LATORIA

TERRACE



2180 Bellflower Drive (Lot 21)

*NOTE: In the interest of maintaining high standards, the developer reserves the right to modify plans, specifications and design without prior notice. Drawings contained within are artist renderings only.

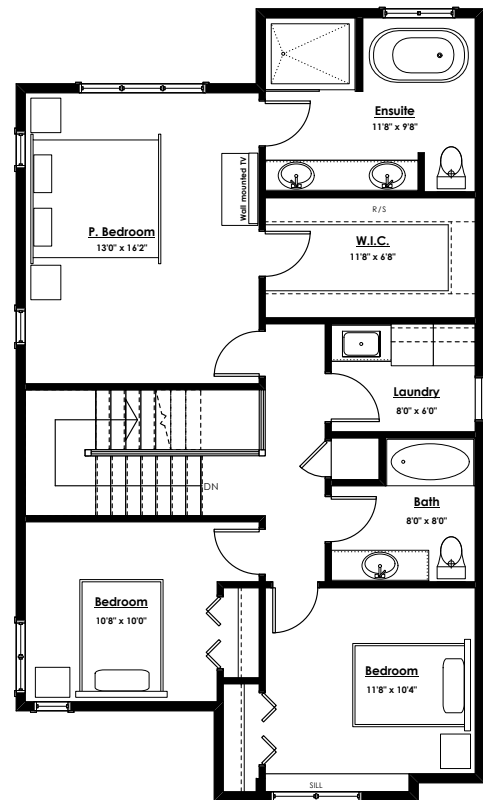
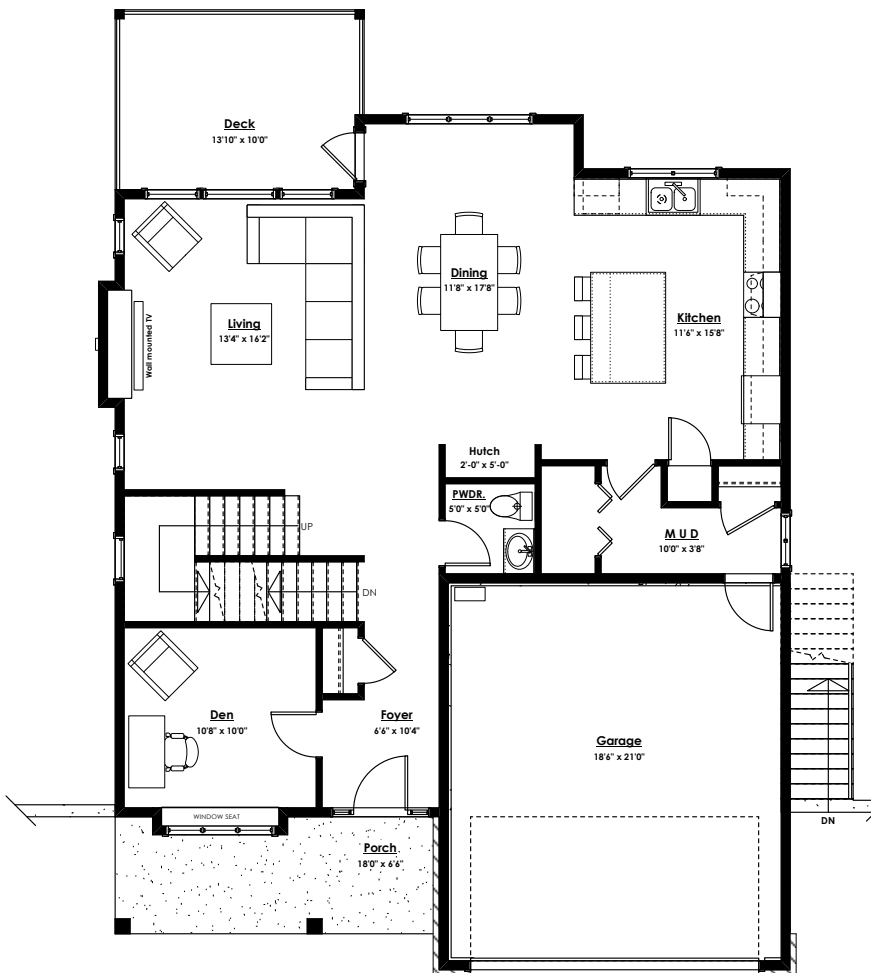
Sizes and dimensions are approximate and may vary with actual plan and survey. Exterior style may change pending municipal approval.

Retaining Wall construction types:

- Non-mortared boulder wall
- Concrete Cast in place wall
- Pre-cast masonry landscape wall

Retaining walls will be designed, placed and constructed in the sole discretion of the developer.

Furniture as shown on plans are for layout purposes only and are not included in the sale.



Main Floor
Primary: 1123 sq.ft.

LIVING AREA
Primary: 2474 sq.ft.
Suite: 788 sq.ft.
Total: 3262 sq.ft.

Upper Floor
Primary: 1030 sq.ft.

OTHER
Garage: 429 sq.ft.