



# LATORIA

## TERRACE



### 2168 Bellflower Dr. (Lot 18)

\*NOTE: In the interest of maintaining high standards, the developer reserves the right to modify plans, specifications and design without prior notice. Drawings contained within are artist renderings only.

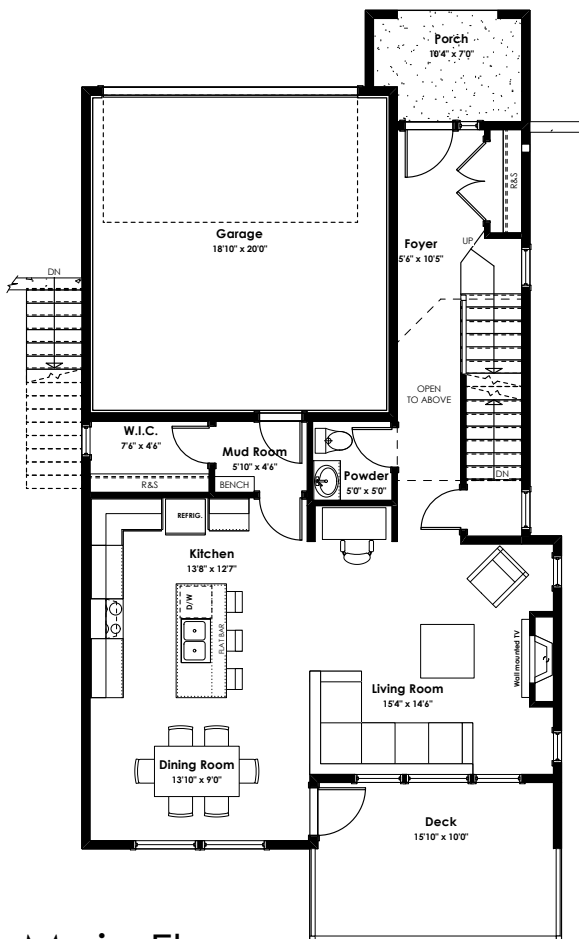
Sizes and dimensions are approximate and may vary with actual plan and survey. Exterior style may change pending municipal approval.

Retaining Wall construction types:

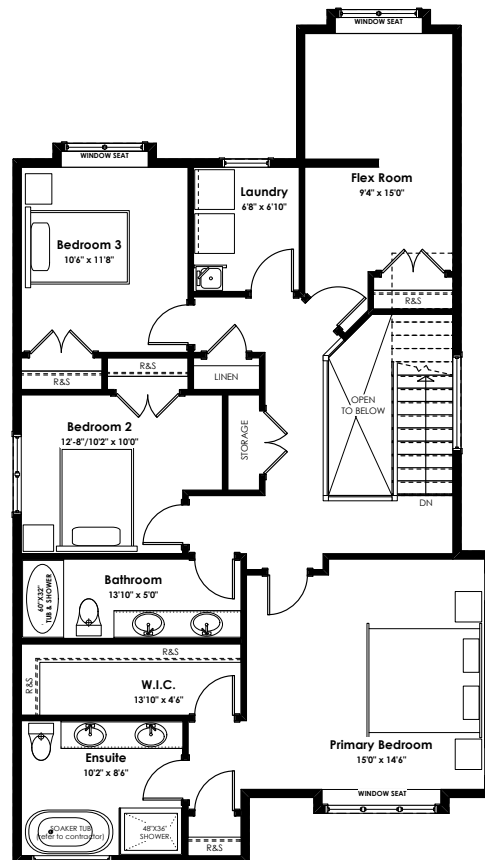
- Non-mortared boulder wall
- Concrete Cast in place wall
- Pre-cast masonry landscape wall

Retaining walls will be designed, placed and constructed in the sole discretion of the developer.

Furniture as shown on plans are for layout purposes only and are not included in the sale.



**Main Floor**  
Primary: 891 sq.ft.



**Upper Floor**  
Primary: 1247 sq.ft.

<b>LIVING AREA</b>	
Primary:	2,595 sq.ft.
Suite:	459 sq.ft.
<b>Total:</b>	<b>3,054 sq.ft.</b>

<b>OTHER</b>	
Garage:	416 sq.ft.



# LATORIA

## TERRACE



### 2168 Bellflower Dr. (Lot 18)

\*NOTE: In the interest of maintaining high standards, the developer reserves the right to modify plans, specifications and design without prior notice. Drawings contained within are artist renderings only.

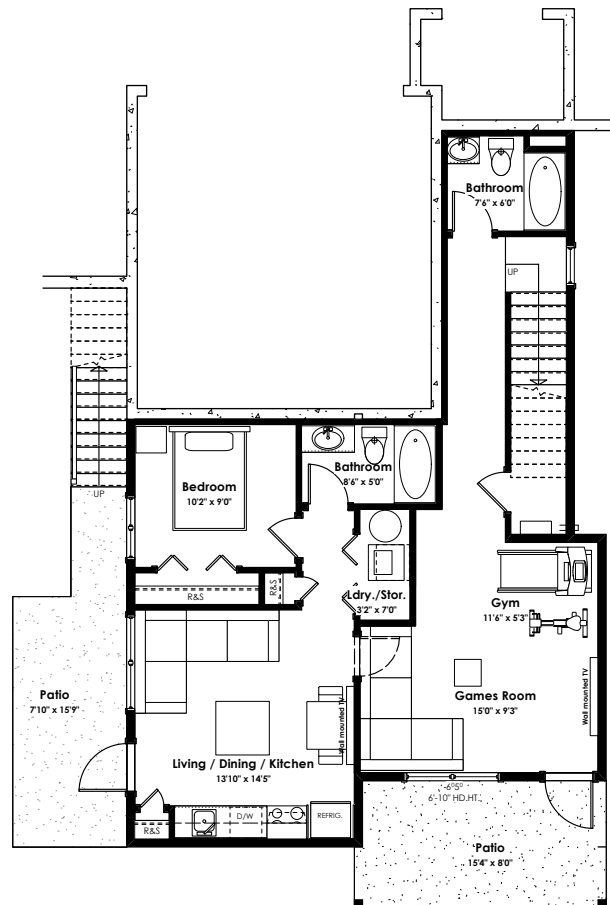
Sizes and dimensions are approximate and may vary with actual plan and survey. Exterior style may change pending municipal approval.

Retaining Wall construction types:

- Non-mortared boulder wall
- Concrete Cast in place wall
- Pre-cast masonry landscape wall

Retaining walls will be designed, placed and constructed in the sole discretion of the developer.

Furniture as shown on plans are for layout purposes only and are not included in the sale.



### Lower Floor

Primary: 457 sq.ft.

Suite: 459 sq.ft.

### LIVING AREA

Primary: 2,595 sq.ft.

Suite: 459 sq.ft.

Total: 3,054 sq.ft.

### OTHER

Garage: 416 sq.ft.